



**NATIONAL  
TRENCH SAFETY UK**

**USER  
GUIDE**

---

**CAGED LADDER PLATFORM  
USER GUIDE & SAFETY INFORMATION**

---



REV 1.0; JAN 2023  
BEN LAWRENCE

NTS (UK), UNIT 28 MOOR LANE TRADING ESTATE, MOXON  
WAY, LEEDS, LS25 6ES. 03332 076 007

THE INFORMATION CONTAINED WITHIN THIS GUIDE REMAINS THE PROPERTY OF NTS (UK) AND IS NOT TO BE ALTERED OR REPRODUCED WITHOUT WRITTEN PERMISSION. NTS (UK) RESERVES THE RIGHT TO CHANGE ANY DATA WITHOUT GIVING PRIOR NOTICE. ONCE PRINTED – UNCONTROLLED.



## Important Note






This User Guide is intended for use of the NTS (UK) Caged Ladder Platform ONLY. All excavation works which the Ladder Access Platform will be used to access must be signed off by a suitably qualified persons and the contractor & are not covered by this guide. Suitable Lift Plans, Risk Assessments & Safe Systems of Work should be implemented by the contractor prior to the commencement of works to ensure the NTS (UK) Caged Ladder Platform is a suitable access system.

This User Guide is intended as guidance for the NTS (UK) Caged Ladder Platform. Any non-standard applications of the NTS (UK) Caged Ladder Platform are not covered by this guide and must be approved by a suitably qualified person. Suitable PPE should be worn at all times when assembling, operating & disassembling the NTS (UK) Caged Ladder Platform.



Ensure all personnel engaged in the installation, operation & use of the NTS (UK) Caged Ladder Platform are properly briefed, have read & understood this guide, are working under a suitable set of RAMS and are supervised by a competent person.

## HEALTH & SAFETY

### PERSONAL PROTECTION EQUIPMENT (PPE)

|   |                                   |
|---|-----------------------------------|
|  | WEAR SUITABLE PROTECTIVE GLOVES   |
|  | WEAR SUITBLE HEAD PROTECTION      |
|  | WEAR SUITABLE PROTECTIVE FOOTWEAR |
|  | USE SUITABLE EYE PROTECTION       |
|  | USE SUITABLE HEARING PROTECTION   |

### HAZARDS

|   |  |
|---|--|
|  | GENERAL CAUTION/WARNING (E.G. DEEP EXCAVATION) |
|  | RISK OF CRUSHED HANDS                          |

REV 1.0; JAN 2023  
BEN LAWRENCE

NTS (UK), UNIT 28 MOOR LANE TRADING ESTATE, MOXON  
WAY, LEEDS, LS25 6ES. 03332 076 007

THE INFORMATION CONTAINED WITHIN THIS GUIDE REMAINS THE PROPERTY OF NTS (UK) AND IS NOT TO BE ALTERED OR REPRODUCED WITHOUT WRITTEN PERMISSION. NTS (UK) RESERVES THE RIGHT TO CHANGE ANY DATA WITHOUT GIVING PRIOR NOTICE. ONCE PRINTED – UNCONTROLLED.

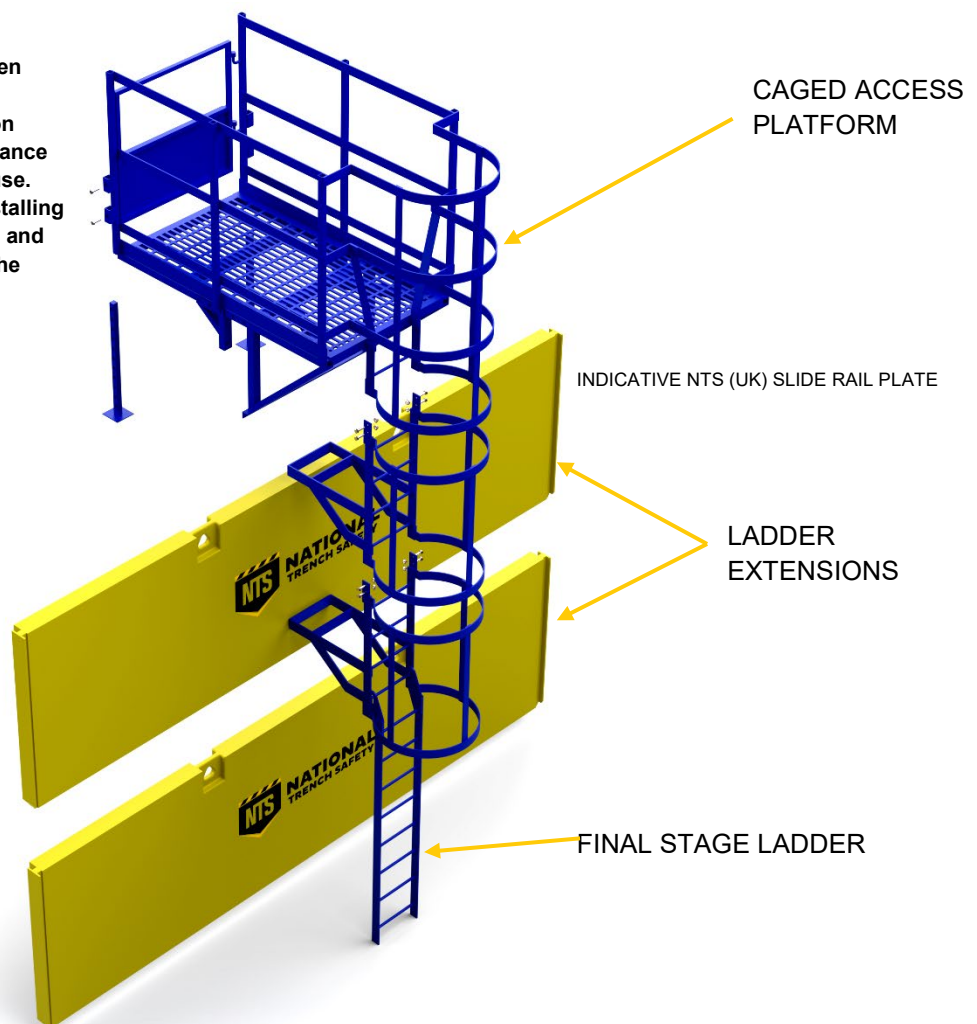


## Introduction

The NTS (UK) Caged Ladder Platform system is intended as a temporary structure to allow safe access and egress to temporary excavations up to 9m deep. It is intended to be used in conjunction with the NTS (UK) Slide Rail shoring system, but may also be adapted for use with other shoring & support systems (e.g., sheet piled cofferdams).

## Equipment List

**Note:** Care must always be taken when using the NTS (UK) Caged Ladder Platform. Particular care and attention must be given to equipment maintenance to ensure equipment is suitable for use. The Contractor is responsible for installing the NTS (UK) Caged Ladder Platform and ensuring it is done correctly as per the guidance set out in this document.



Always ensure that all components required for the system are present. Always check for damage & defects such as damaged connections & missing rungs and be aware of personnel working below the ladder at all times.



REV 1.0; JAN 2023  
BEN LAWRENCE

NTS (UK), UNIT 28 MOOR LANE TRADING ESTATE, MOXON  
WAY, LEEDS, LS25 6ES. 03332 076 007

THE INFORMATION CONTAINED WITHIN THIS GUIDE REMAINS THE PROPERTY OF NTS (UK) AND IS NOT TO BE ALTERED OR REPRODUCED WITHOUT WRITTEN PERMISSION. NTS (UK) RESERVES THE RIGHT TO CHANGE ANY DATA WITHOUT GIVING PRIOR NOTICE. ONCE PRINTED – UNCONTROLLED.



**DATA SHEET**

| ITEM DESCRIPTION      | DIMENSIONS (mm) | WEIGHT (kg) | QUANTITY REQUIRED |
|-----------------------|-----------------|-------------|-------------------|
| Caged Access Platform |                 |             | 1                 |
| 1.0m Ladder Extension |                 |             | Various           |
| 2.0m Ladder Extension |                 |             | Various           |
| Ladder Brackets       |                 |             | Various           |
| Final Stage Ladder    |                 |             | 1                 |



## INSTALLATION SEQUENCE

### INSTALLATION IN CONJUNCTION WITH NTS (UK) SLIDE RAIL SYSTEM

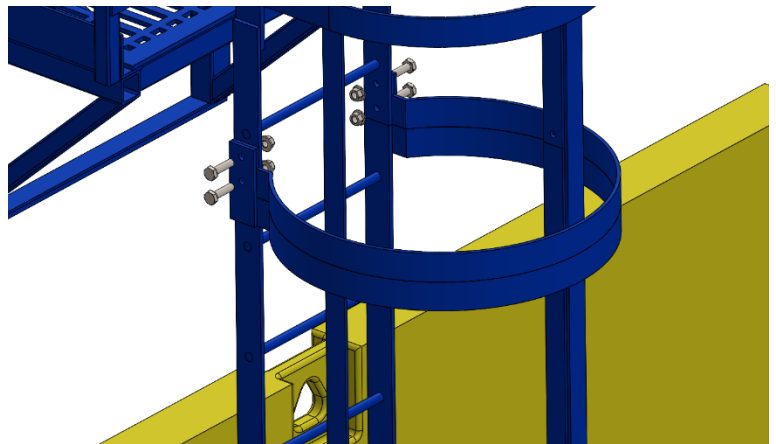
FOR OTHER INSTALLATION METHODS APPLICABLE FOR OTHER SHORING SYSTEMS PLEASE CONSULT A SUITABLE QUALIFIED ENGINEER.

1. Ensure the NTS (UK) Slide Rail System has been installed to full depth and that the temporary works excavation is at the depth required.
2. Lay the NTS (UK) Ladder Access Platform on its side at a safe distance from the excavation on flat, firm, even ground with sufficient working room.
3. Pre-set the platform clamp.

#### Platform Clamp Pre-Set Adjustment

To accommodate the NTS (UK) Slide Rail (or other supporting structure), pre-set the Platform Clamp in advance by winding the pair of screw rods fully back (within their travel), retracting the telescopic slider pin and repositioning the slider so that the resulting gap is large enough to accommodate the selected NTS (UK) Slide Rail panel (or other e.g., sheet pile).

4. Manoeuvre the required ladder extension so that it aligns with the base of the Access Platform in the same orientation (on its side so the rungs and cages are parallel with those of the Access Platform).
5. Insert the Ladder Extension into the Ladder Platform so that the joint plates on each component align with each other.
6. Fit and tighten the supplied bolts.



Ensure that all joint plates are correctly in place and that all bolts are tight.





7. Repeat stages 4-7 as required with the supplied extensions to achieve the required depth (allowing for the Final Stage Ladder; 2.0m long).
8. Fit the stabilising Ladder Brackets to the completed Caged Ladder Platform. As a rough guide there should be 1No. Ladder Bracket per Ladder Extension Module (plus 1No. for the Final Stage Ladder). The shorter reach brackets are to be fitted so as they abut against the NTS (UK) Slide Rail outer plates in the deeper parts of the excavation. (Ladder Brackets may be pre-welded on some models).
9. Connect the Final Stage Ladder by inserting it into the final Ladder Extension Module & engaging the ladder hooks over the appropriate rung for the required depth.

10. Ensure a Lift Plan has been carried out and allows for the lift of the full load of the completed Caged Ladder Platform at the required each.
11. Attach the required lifting equipment (e.g., lifting chains) to the lifting points on the Access Platform as detailed in the completed lift plan.



12. Lift the Caged Ladder Platform as per the completed lift plan and lower over the NTS (UK) Slide Rail System at the designated access point with the Ladders extending into the temporary excavation.
13. Engage the platform clamp over the NTS (UK) Side Rail Plates.
14. Remove the adjusting pin and slide the Platform Clamp towards the Slide Rail Plates. Re-insert the pin in the hole closest to the plates.
15. Fully tighten the clamp against the Slide Rail Plate by winding the screw rods out to meet the Slide Rail Plate.



16. Both the front of the clamp and the screw rods must be in stable, secure, contact with the Slide Rail Plate. Ensure the clamps are tight. Do not overtighten the clamps.
17. Adjust the back legs of the Access Platform as required to ensure that the platform is level and stable.
18. Only once the system is fully installed and with the Final Stage Ladder in place can the system be used to access and egress the excavation.
19. Perform a final check of all components prior to the first descent. Ensure all components are correctly fitted & secure and have been checked by and independent competent person.



**Extreme care and adequate precautions must be taken to prevent trapping of fingers during assembly, disassembly and installation.**

**Always carry out a lift plan and use certified lifting equipment to handle the equipment.**

**Site personnel working on or near the NTS (UK) Caged Ladder Platform must adhere to the RAMS & SSOW and adhere to any exclusion zones highlighted in those documents.**

**Do not exceed the maximum recommended depth of 9m as per HSE's Guidance – Construction Work at Height)**

