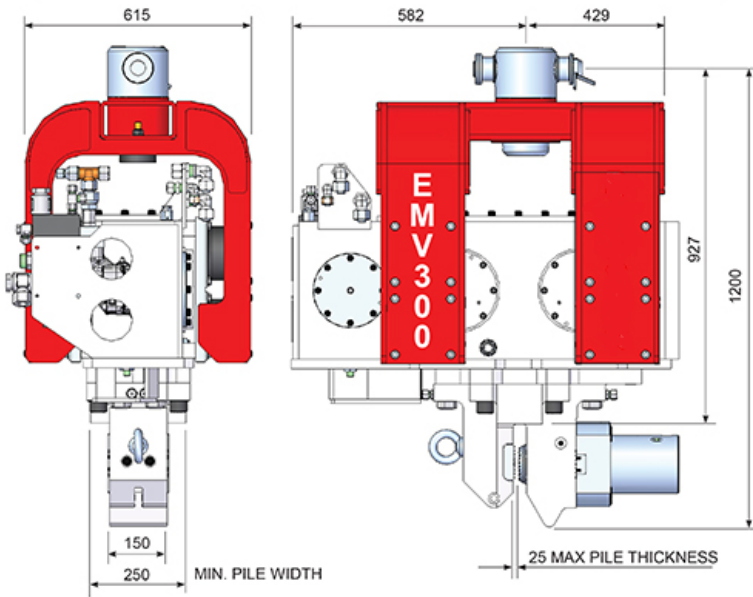


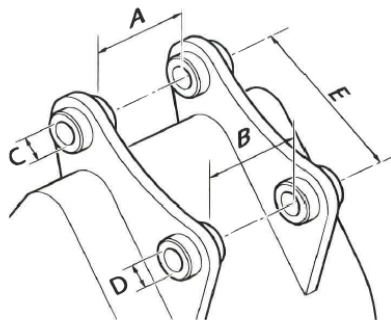
TECHNICAL DATA SHEET

EMV 300 Piling Hammer

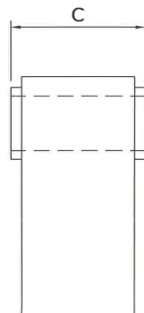
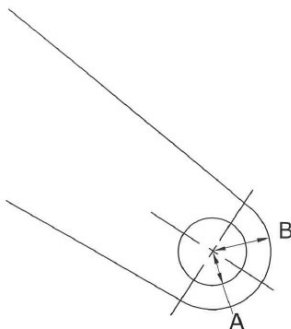


*****Client to provide dimensions below*****

DIPPER WIDTH A	_____mm
DIPPER WIDTH B	_____mm
PIN DIAMETER C	_____mm
PIN DIAMETER D	_____mm
PIN CENTRES E	_____mm



* Take measurements from a bucket that fits the excavator



PIN DIAMETER	A	_____mm
RADIUS	B	_____mm
DIPPER WIDTH	C	_____mm

Dipper arm dimensions

Specification	Units	EMV 300
STATIC MOMENT	kgm	4.6
	in lbs	400
FREQUENCY	Rpm	2,400
CENTRIFUGAL FORCE	kN	300
	lbs.F	67,420
AMPLITUDE	Mm	14.7
	In	0.58
MIN. HYDRAULIC FLOW RATE	L/min	130
	Gpm	35
MAX. HYDRAULIC FLOW RATE	L/min	250
	Gpm	67
MAX. HYDRAULIC PRESSURE	Bar	350
	Psi	5,076
MIN. HYDRAULIC POWER	kW	60
	Hp	80
DYNAMIC MASS	Kg	625
	lbs	1,380
TOTAL MASS	kg	965
	lbs	2,123
MAX. PILE MASS	kg	800
	lbs	1,760
MAX PUSH/ PULL FORCE	kg	15,000
	lbs	33,000
CLAMP FORCE	tonne	36
TYPICAL EXCAVATOR WEIGHT	tonne	12-35
EMV WEIGHT WITH OIL	kg	975
EMV STAND	kg	112
ADAPTER BRACKET (including pin)	kg	33
TRANSPORT WEIGHT	kg	1120

Issue No: 01 Issue date: January 2019	Sheet 1 of 1	National Trench Safety can support your project. Call our National Team - 03332 076 007
NTS (UK), Unit 28 Moor Lane Trading Estate, Moxon Way, Sherburn in Elmet, Leeds, LS25 6ES.		The information contained within these data sheets remains the property of NTS (UK) and is not to be altered or reproduced without written permission. NTS (UK) reserves the right to change any data without giving prior notice. ONCE PRINTED - UNCONTROLLED